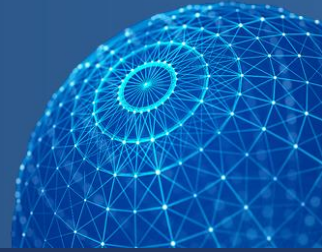




Updating ANZSCO

Reflecting a modern Australian labour market



Rail transport

ANZSCO Comprehensive Review

Australian Bureau of Statistics

17/6/2024

ANZSCO [Preliminary] Proposed Changes

Version 1.0



Updating ANZSCO

Reflecting a modern Australian labour market



Essential Notes

The Australian and New Zealand Statistical Classification of Occupations (ANZSCO) describes all occupations for the Australian and New Zealand labour market.

The ABS has undertaken a comprehensive review of the Australian and New Zealand Standard Classification of Occupations (ANZSCO) to reflect the contemporary labour market and better meet stakeholders' needs. Public consultation rounds were held across 2023, with each round targeting selected occupations grouped by focus area.

Statistics New Zealand (Stats NZ) have elected not to participate in the current review and therefore occupation changes have only been considered in respect of the Australian labour market.

Updates to document

This document has been updated based on stakeholder feedback and further research. Minor updates have been made to a handful of occupations. The format of the document has also been updated to improve usability based on feedback received. A preliminary proposed changes document has been created for each of the 43 focus areas. Focus areas were designed to group occupations for consultation purposes only and will not be present in the classification structure.

The preliminary proposed changes presented do not include the full scope of not elsewhere classified categories (nec). Exclusion statements are incomplete and do not reference specific occupation locations within the classification. Outstanding nec categories, exclusion statements and final tweaks to occupations are currently being finalised in preparation for the release of the draft proposed classification in July on the ABS website. The July release will provide users with an opportunity to provide feedback on the structure of the proposed changes, before finalising the update for release by December 2024. These preliminary proposed changes documents are for information only.

Task lists

ABS recognises the potential of Artificial Intelligence (AI) to enhance our operations and efficiency. To this end, we have employed AI to assist in the creation of initial task lists. However, human experts are responsible for the final content, and AI serves as a tool, not a decision-maker. We value stakeholder input and incorporate it into our editing process placing importance on stakeholder submissions and other relevant research contributions.

Learn more about ANZSCO and the review at [Updating ANZSCO | Australian Bureau of Statistics \(abs.gov.au\)](https://abs.gov.au)

Occupations in the Rail transport focus area include:

149412 Railway Station Manager	5
712917 Railway Signal Operator	6
712918 Train Controller	7
721914 Railway Track Plant Operator	8
731311 Train Driver	9
899917 Railways Assistant	10



About the focus area

The Rail transport focus area covers occupations which require specialised knowledge and skills to:

- organise and control the operations and maintenance of a railway station
- control the movement of trains, and assemble and disassemble trains within a marshalling yard
- oversee the safe movement of trains using computerised train signalling network
- operate plant to lay, align, repair and maintain railway tracks
- drive a train to transport passengers or freight on railways.

Summary of consultation

There was strong agreement among stakeholders of rail transport related occupations that skill levels needed to be updated to align with modern industry standards. Therefore, skill levels for several occupations were adjusted to reflect qualification requirements. Additionally, new occupations were introduced, and existing ones were split to differentiate the distinct tasks and responsibilities associated with each role.

149412 Railway Station Manager

Existing	Proposed
<p>149412 Railway Station Manager</p> <p>Organises and controls the operations of a railway station.</p> <p>Skill Level: 2</p>	<p>149412 Railway Station Manager</p> <p>Organises and controls the operations of a railway station.</p> <p>Skill Level: 2</p> <p>Main Tasks:</p> <ul style="list-style-type: none">• Ensures the safe and efficient daily operations of a railway station• Reports failures and delays, and takes appropriate action to ensure customers have access to timely, concise and accurate information• Coordinates and supervises railway station staff, including rostering and training• Monitors and oversees the maintenance of railway station facilities including platforms, waiting areas and ticketing systems• Conducts regular inspections of railway station facilities and equipment to identify maintenance needs, and organises repairs as required• Handles customer enquiries, incidents, complaints and requests for assistance• Prepares reports on railway station performance, including passenger numbers, revenue and service disruptions

712917 Railway Signal Operator

Existing	Proposed	
<p>712917 Railway Signal Operator</p> <p>Alternative Title:</p> <ul style="list-style-type: none"> Railway Switching and Signalling Operator <p>Controls the movement of trains, and assembles and disassembles trains within a marshalling yard.</p> <p>Skill Level: 4</p> <p>Specialisations:</p> <ul style="list-style-type: none"> Railway Shunter Railway Yard Assistant 	<p>712924 Railway Shunter</p> <p>Sorts, assembles and disassembles trains from rolling stock, and safely moves trains within marshalling yards.</p> <p>Railway Signal Operators are excluded from this occupation.</p> <p>Skill Level: 4</p> <p>Main Tasks:</p> <ul style="list-style-type: none"> Assembles and disassembles trains, locomotives and/or rolling stock in the marshalling yard Places wagons into railway parking tracks (sidings) Moves trains safely between yards and platforms Conducts safety checks on trains and rolling stock Directs train drivers around the marshalling yard 	<p>712925 Railway Signal Operator</p> <p>Controls the movement of trains using manual and electronic signals, and notifies control centres of delays or accidents.</p> <p>Railway Shunters are excluded from this occupation.</p> <p>Skill Level: 4</p> <p>Main Tasks:</p> <ul style="list-style-type: none"> Interprets movement orders and timetables to monitor train movements and the arrangement of rolling stock Operates control panels and switches to control the movement of trains Communicates with train drivers and other railway personnel using radios and communication systems Notifies control centres of delays or accidents Operates railway turntables to change the direction of rolling stock Inspects railway signals and equipment, and reports faults and malfunctions

712918 Train Controller

Existing	Proposed
<p>712918 Train Controller</p> <p>Oversees the safe movement of trains using a computerised train control signalling system.</p> <p>Skill Level: 4</p>	<p>712926 Railway Network Controller</p> <p>Oversees the safe operation of a railway network using a computerised train control signalling system.</p> <p>Railway Signal Operators are excluded from this occupation.</p> <p>Skill Level: 3</p> <p>Main Tasks:</p> <ul style="list-style-type: none">• Assesses and approves the movement of trains to ensure the safe operation of a rail network, based on the status of railway signals• Authorises and controls any activity taking place on railway tracks, including maintenance work• Communicates with Railway Signal Operators to carry out alterations to signals as required• Records movements of trains• Minimises delays caused by rail network disruptions• Recommends suitable alternative services during disruptions• Liaises with emergency services in response to accidents or disruptions

721914 Railway Track Plant Operator

Existing	Proposed
<p>721914 Railway Track Plant Operator</p> <p>Operates plant to lay, align, repair and maintain railway tracks.</p> <p>Registration or licensing may be required.</p> <p>Skill Level: 4</p>	<p>721914 Railway Track Plant Operator</p> <p>Operates plant to lay, align, repair and maintain railway tracks.</p> <p>Registration or licensing may be required.</p> <p>Skill Level: 4</p> <p>Main Tasks:</p> <ul style="list-style-type: none">• Inspects and assesses railway tracks to identify maintenance and repair needs• Operates plant machinery to lay and align railway tracks• Repairs and maintains railway tracks using appropriate tools and equipment• Monitors and adjusts track alignment to ensure safe and efficient train operations• Performs routine maintenance tasks on plant machinery to ensure proper functioning• Collaborates with other railway personnel to coordinate track maintenance activities

731311 Train Driver

Existing	Proposed	
<p>731311 Train Driver</p> <p>Alternative Title:</p> <ul style="list-style-type: none"> Locomotive Driver <p>Drives a train to transport passengers and freight on railways.</p> <p>Registration or licensing is required.</p> <p>Skill Level:</p> <ul style="list-style-type: none"> 4 Australia 3 New Zealand <p>Specialisations:</p> <ul style="list-style-type: none"> Electric Train Driver Fireperson (Railway) Locomotive Observer Rail Car Driver Steam Train Driver 	<p>731313 Freight Train Driver</p> <p>Alternative Title:</p> <ul style="list-style-type: none"> Freight Locomotive Driver <p>Drives a train to transport freight on railways.</p> <p>Registration or licensing is required.</p> <p>Passenger Train Drivers are excluded from this occupation.</p> <p>Skill Level: 3</p> <p>Main Tasks:</p> <ul style="list-style-type: none"> Inspects locomotives and rolling stock before, during and after journeys Operates and monitors controls to regulate speed, direction and braking, and track fuel consumption Ensures livestock freight are safe and in good physical condition Communicates with control centres and other train crew using radios and signals Manages the loading and unloading of freight Performs minor repairs and maintenance tasks on-track if necessary Couples and uncouples wagons using manual tools Keeps records of journeys, delays and any incidents that occur Follows timetables and schedules to ensure on-time delivery of freight 	<p>731314 Passenger Train Driver</p> <p>Drives a train to transport passengers on railways.</p> <p>Registration or licensing is required.</p> <p>Freight Train Drivers are excluded from this occupation.</p> <p>Skill Level: 3</p> <p>Main Tasks:</p> <ul style="list-style-type: none"> Operates and monitors controls to regulate speed, direction and braking of the train Monitors track and weather conditions, and railway signals Ensures passengers, including those with mobility restrictions, board and alight vehicles in a safe and timely manner Communicates with control centres using radio or other communication devices Adheres to timetables and schedules to ensure on-time arrival and departures of trains Makes announcements to passengers and liaises with onboard staff Responds to emergencies or unexpected situations such as mechanical failures or medical incidents Ensures public safety by adhering to public Duty of Care protocols and monitoring transit security procedures Completes reports related to train operations and incidents <p>Specialisations:</p> <ul style="list-style-type: none"> Passenger Locomotive Driver Rail Car Driver

899917 Railways Assistant

Existing	Proposed
<p>899917 Railways Assistant</p> <p>Assists with operating and maintaining facilities at a railway station by updating platform indicators showing train times and destinations, collecting and checking passenger tickets, giving signals for train departures, and cleaning station facilities.</p> <p>Skill Level: 5</p>	<p>899925 Railways Assistant</p> <p>Assists with operating and maintaining facilities at a railway station, and selling tickets to passengers.</p> <p>Rail Guards or Conductors are excluded from this occupation.</p> <p>Skill Level: 5</p> <p>Main Tasks:</p> <ul style="list-style-type: none">• Assists rail passengers by providing information regarding train schedules and services, and answering enquiries• Assists rail passengers with additional needs such as wheelchair users, or those with large luggage or prams• Sells tickets to rail passengers and assists with monitoring ticket barriers• Maintains the cleanliness of railway station facilities, including platforms, waiting areas and restrooms• Reports any safety hazards or maintenance issues to the appropriate authorities for action